

Chautauqua Lake And Watershed Management Alliance Meeting

Thursday May 14th, 2026

Alejandro Reyes

Aquatic Ecologist/Project Manager

GEI Consultants

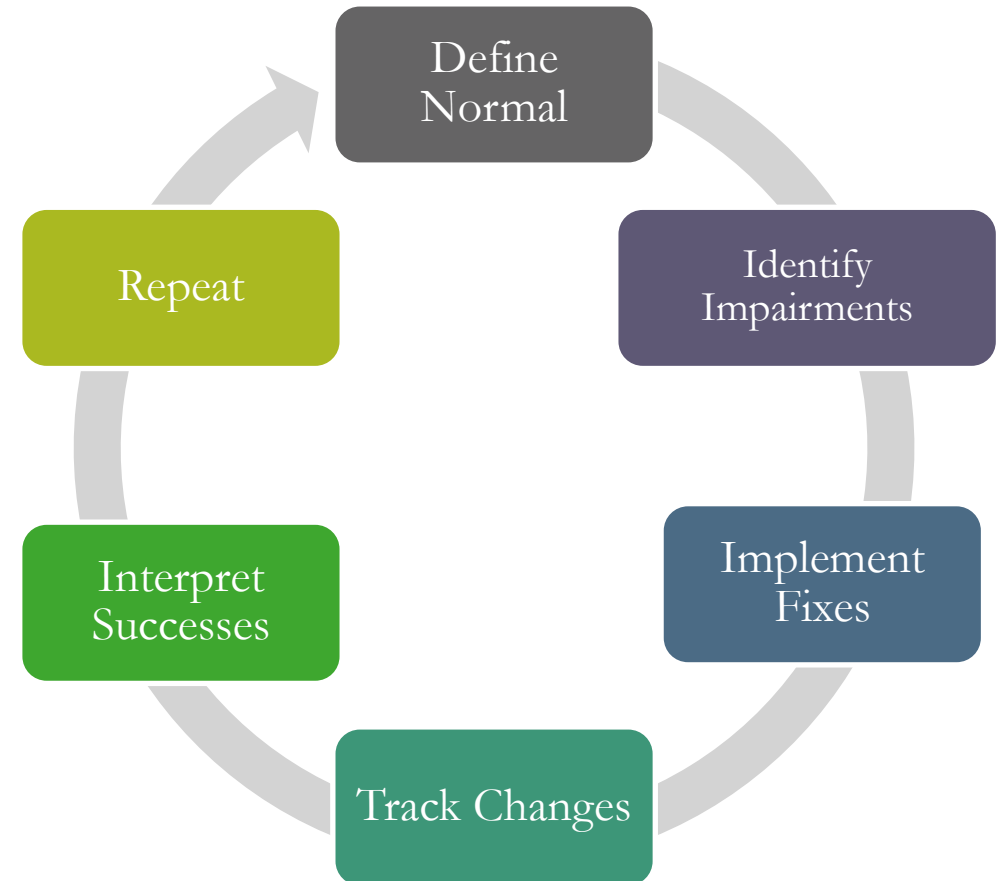
Outline

- Scientific Advisor Role
- Review of 2025 Activities
- Major Recommendations
- 2026 Progress
- Looking forward



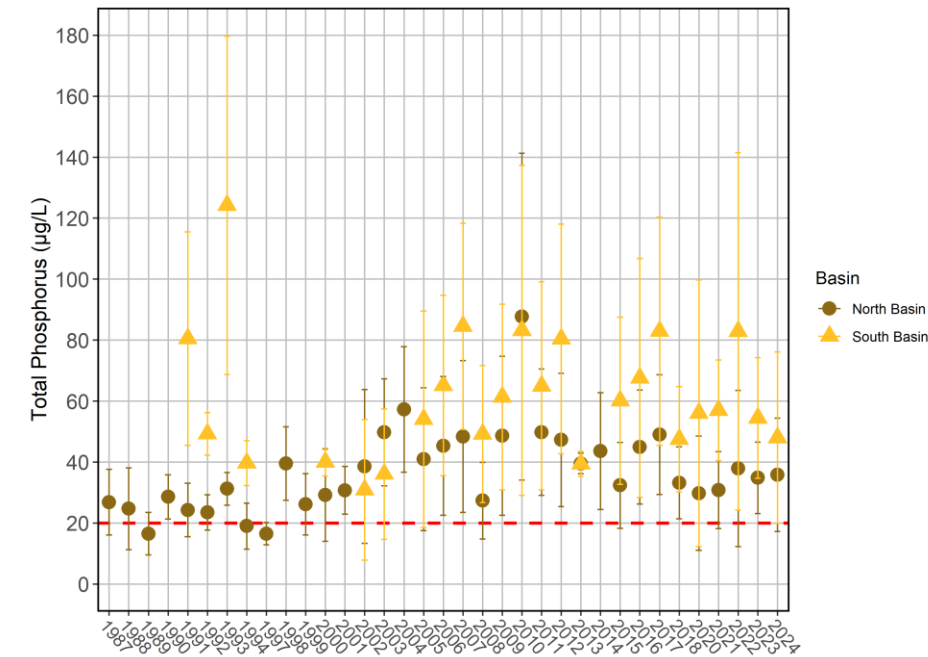
Scientific Advisor Role

- Advise the Alliance's Board of Directors on a variety of matters related to the health and management of Chautauqua Lake and the allocation of financial resources for lake management.
- Independent, third-party advisement.
- Focused on lake maintenance activities with additional focus on nutrients and HAB's.



2025 (Year 1)

- Key 2025 Tasks/Items
 - Background Research
 - Contractor and Partner Interviews
 - Field Reconnaissance Visits
 - Board Funding Decision Support
 - Public Communication and presentation
 - South Basin Elodea Growth



Key Recommendations

- Provided the CLWMA with recommendations for Lake Improvement.
- Major recommendations include:
 - Long term Analysis of Management Actions
 - Starry Stonewort Management Plan
 - South Basin Access Lanes

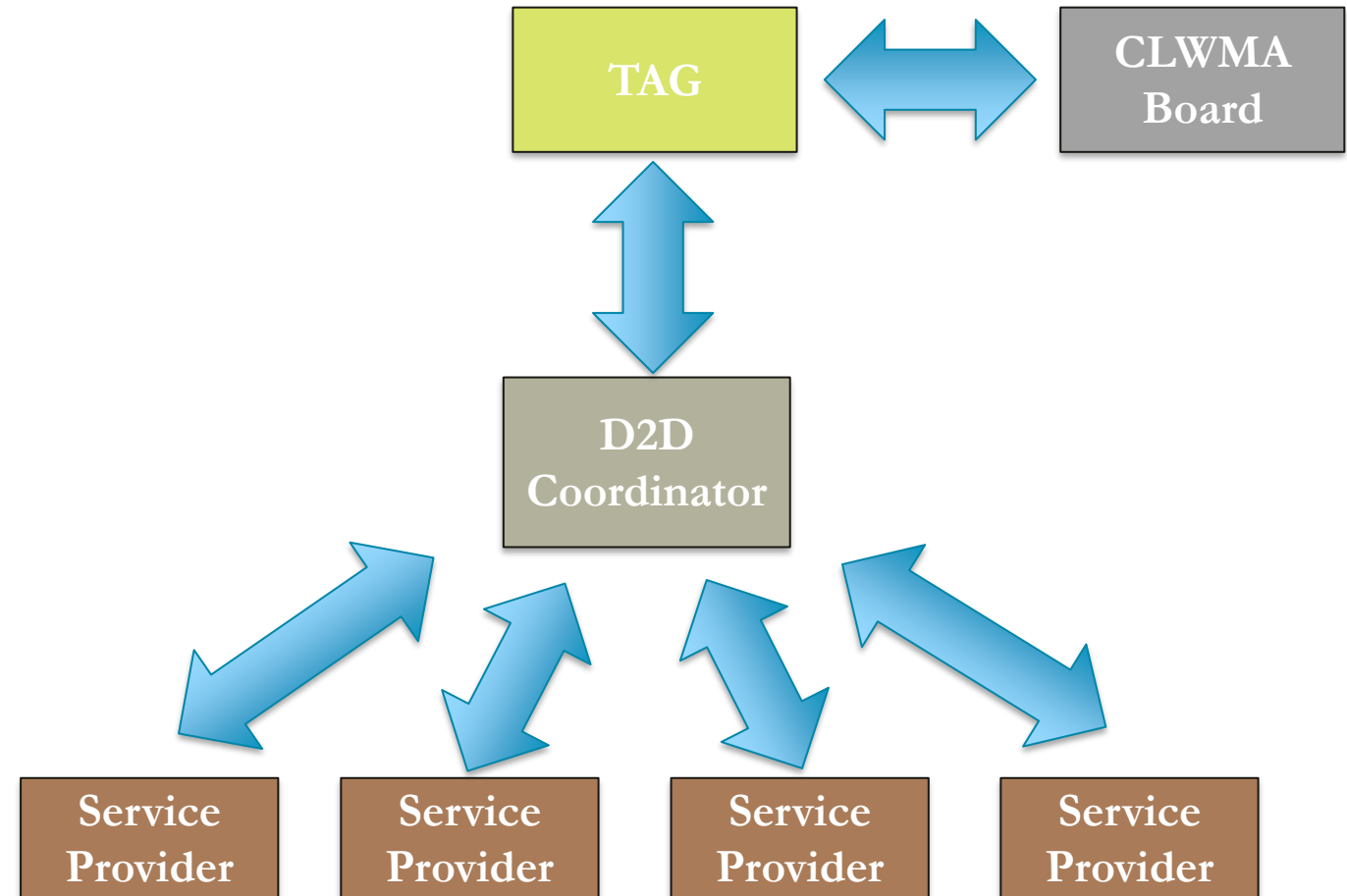
Appendix A. Summary of Recommendations. Note: Timeline assumes implementing of recommendation to being in 2026.

Rec. Number	Recommendation	Relative Cost	Timeline	Potential Lead Organization	Priority
1	Develop an Overall Strategy for Starry Stonewort Management on Chautauqua Lake	\$\$	Begin Spring 2026; roles set before July–Sept 2026; report Nov/Dec 2026; next-season plan by Jan 2027	CLWMA (coordination lead) + CWC/CLA/TOC/CLP (implementation partners)	High
2	Understanding and Analysis of Long-Term Survey Data to Inform Aquatic Plant Management Effectiveness and Impacts	\$\$	Start Winter/Spring 2026; complete Fall/Winter 2026–2027; update every ~5 years	CLWMA (sponsor) + GEI (analysis lead) + NCSU/SUNY Oneonta (data partners)	High
3	Improve South Basin Access for all Patrons	\$\$–\$\$\$\$	Establish late May–early June (preferably before Memorial Day); maintain through growing season	CLA (harvesting) + CLP (herbicide coordination) + CLWMA (funding/oversight)	High
4	Continue to Support NCSU Management Plan and Management Actions under the NCSU Management Plan	\$	Ongoing annually; periodic updates as needed	CLWMA + CLP (implementation alignment) + NCSU (plan owner)	High
5	Continued Collaboration Between Partners and State Agencies	\$	Ongoing annually (especially during management season)	All partners + NYSDEC	High



DEVELOP AN OVERALL STRATEGY FOR STARRY STONEWORT MANAGEMENT ON CHAUTAUQUA LAKE

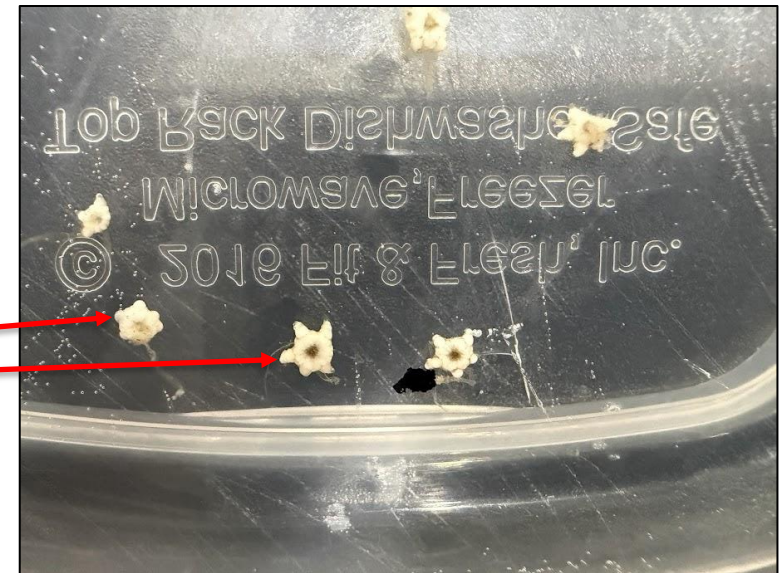
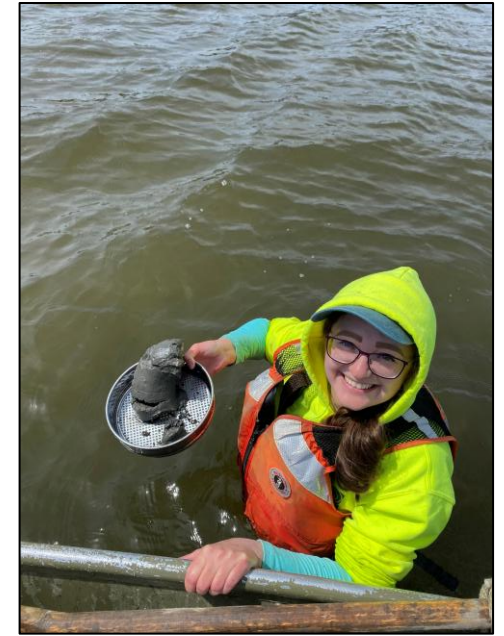
- Strategy should include
 - Achievable goals, thresholds, and milestones.
 - Formation of Technical Advisory Group (TAG) made up of experts/CLMs.
 - Feedback loop between service providers, day to day coordinator, TAG and CLWMA Board.



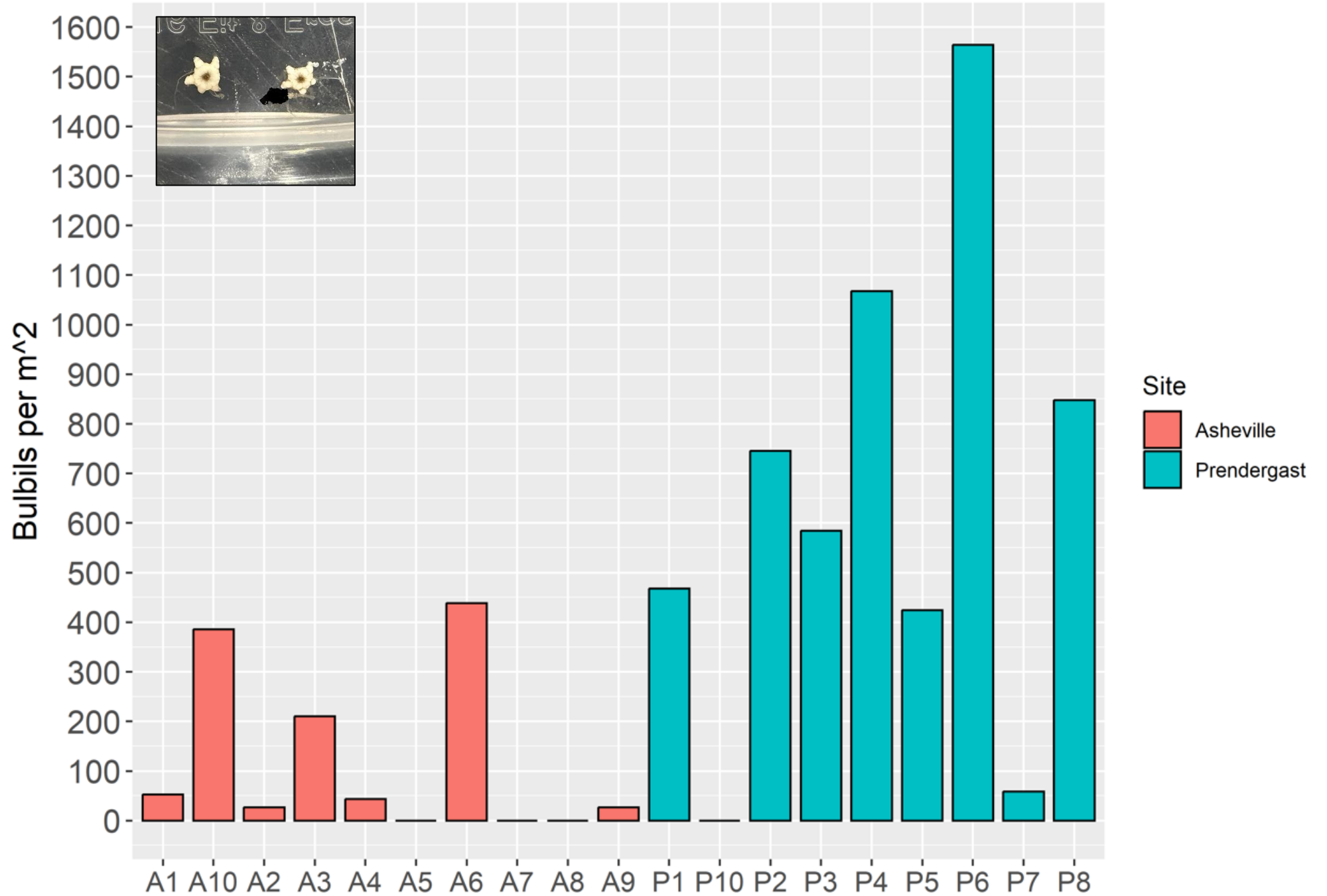
Progress – Starry Stonewort

- Development of Management Plan

- Potential TAG Members
 - Dr. Ryan Wersal, University of Minnesota
 - Dr. Rob Richardson, North Carolina State University
 - Dr. Chris Pennuto, Buffalo State University
 - Sam Beck Anderson, Finger Lakes PRISM
 - Lindsey Yoder, NYSDEC Region 9 AIS Coordinator
- Plan Writing
 - Goal setting and background information on Starry stonewort.
- Bulbil Sampling

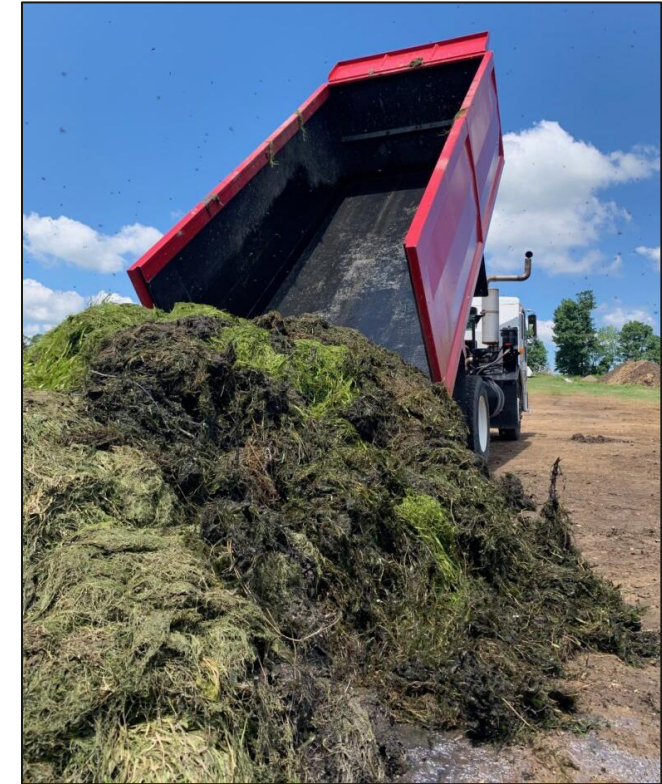


Starry Stonewort
Bulbil Density at
Asheville and
Prendergast



EVALUATION OF SURVEY DATA TO INFORM AQUATIC PLANT MANAGEMENT EFFECTIVENESS AND IMPACTS.

- How well are the management actions that are employed working?
- DEC has directly mentioned the need for effectiveness monitoring.
- Lots of previous data, but no direct answers to those questions.
- Continue independent review and analysis of past and present data to inform management approach.



Credit: CLA Website



Progress - Long Term Data Analysis

- North Carolina State University is starting a project to determine long term effectiveness of herbicide treatments.
- GEI is working with CLA to determine successful metrics for harvesting efforts.



IMPROVE SOUTH BASIN ACCESS FOR ALL LAKE USERS

- Goal is to have a flexible plan to respond to changing lake conditions.
- All lake users should have access to all areas of the south basin.
- Multiple management strategies.
- Collaboration between all stakeholders.



Credit: NCSU



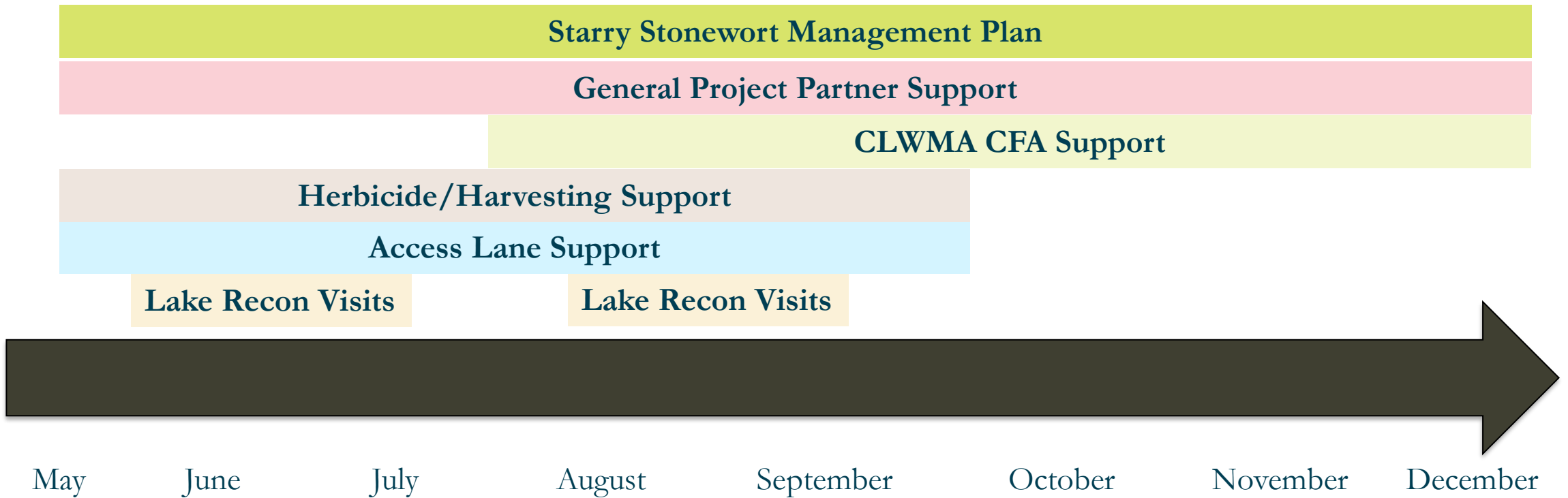
Progress - South Basin Access

- CLP submitted permit for Management of Navigational Zones.
- Realistic permitting pathway for zone formation.
- CLA and CLP organization and Communication.
- Not a guarantee that the basin will look the same in 2026.



2026 Activities Timeline

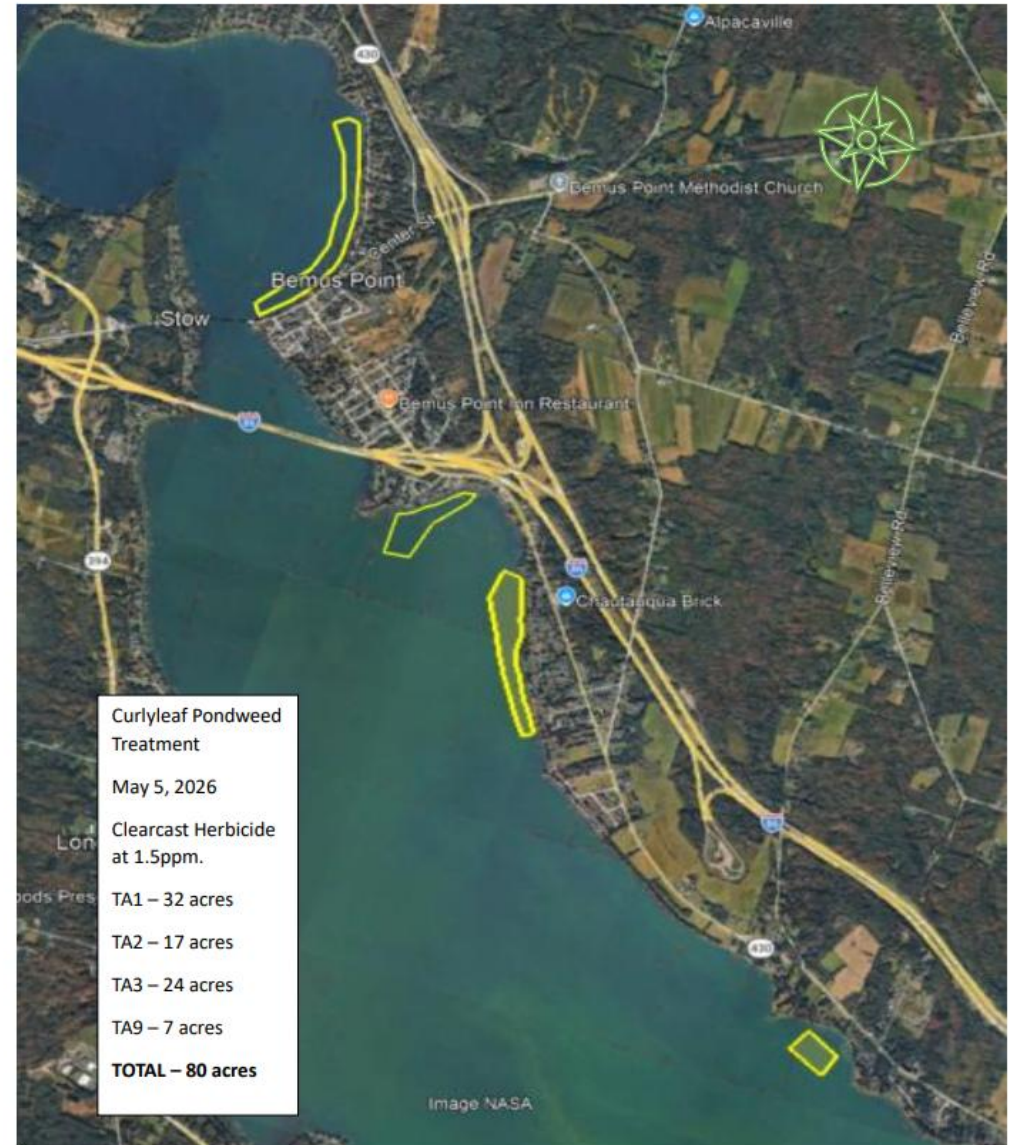
***GEI is in constant communication with all project partners through all times of the season!**



2026 Management Activities

- Curly Leaf Pondweed
 - Treatment with clearcast, 80 acres focused on Bemus Bay.
- CLA debris cleanup
 - Started on 4/20, finishing up this week.
- CLA early harvesting
 - Started around 5/4/26
- EWM treatments
 - TBD June
- Starry Stonewort Harvesting
 - DASH and Mobitrac July to September timeframe.

2026 Chautauqua Lake FINAL Curlyleaf Pondweed Treatment Zones (in Yellow)



Questions?

