



# **2024 Annual Report of the Chautauqua Lake & Watershed Management Alliance**

Presented at the May Member Meeting, The Lawson Center, Bemus Point, NY & via Zoom

Randall Perry, Executive Director, Chautauqua Lake & Watershed Management Alliance

May 8, 2025

# History & Structure of Our Alliance



- ❑ 501c3 Non-Profit Member Organization
  - ❖ 31 Founding Members
- ❑ Evolved from the Chautauqua Lake Management Commission (CLMC) in late 2014
- ❑ Established for the benefit of all lake and watershed stakeholders
- ❑ Our Mission:

The CLWMA, working in collaboration with lake and watershed-related organizations, municipalities and other stakeholders, will promote and facilitate implementation of recommendations from the Chautauqua Lake Watershed Management Plan and the Chautauqua Lake Macrophyte Management Strategy by prioritizing projects, securing funding and allocating resources.



## Founding Members

- Chautauqua - Cattaraugus Board of Realtors
- Chautauqua County Chamber of Commerce
- Chautauqua County Government
- Chautauqua County Soil & Water Conservation District
- Chautauqua County Visitors Bureau
- Chautauqua Institution
- Chautauqua Lake Association
- Chautauqua Lake Fishing Association
- Chautauqua Lake Partnership Owners Association
- Chautauqua Utility District
- Chautauqua Watershed Conservancy
- Holmberg Foundation
- Jamestown Audubon Society
- The Lenna Foundation
- Mayville - Chautauqua Community Chamber of Commerce
- NYS Office of Parks, Recreation and Historic Preservation - Allegany Region
- North Chautauqua Lake Sewer District
- Roger Tory Peterson Institute
- South & Center Chautauqua Lake Sewer District
- Town of Busti
- Town of Chautauqua
- Town of Ellery
- Town of Ellicott
- Town of North Harmony
- Village of Bemus Point
- Village of Celoron
- Village of Lakewood
- Village of Mayville

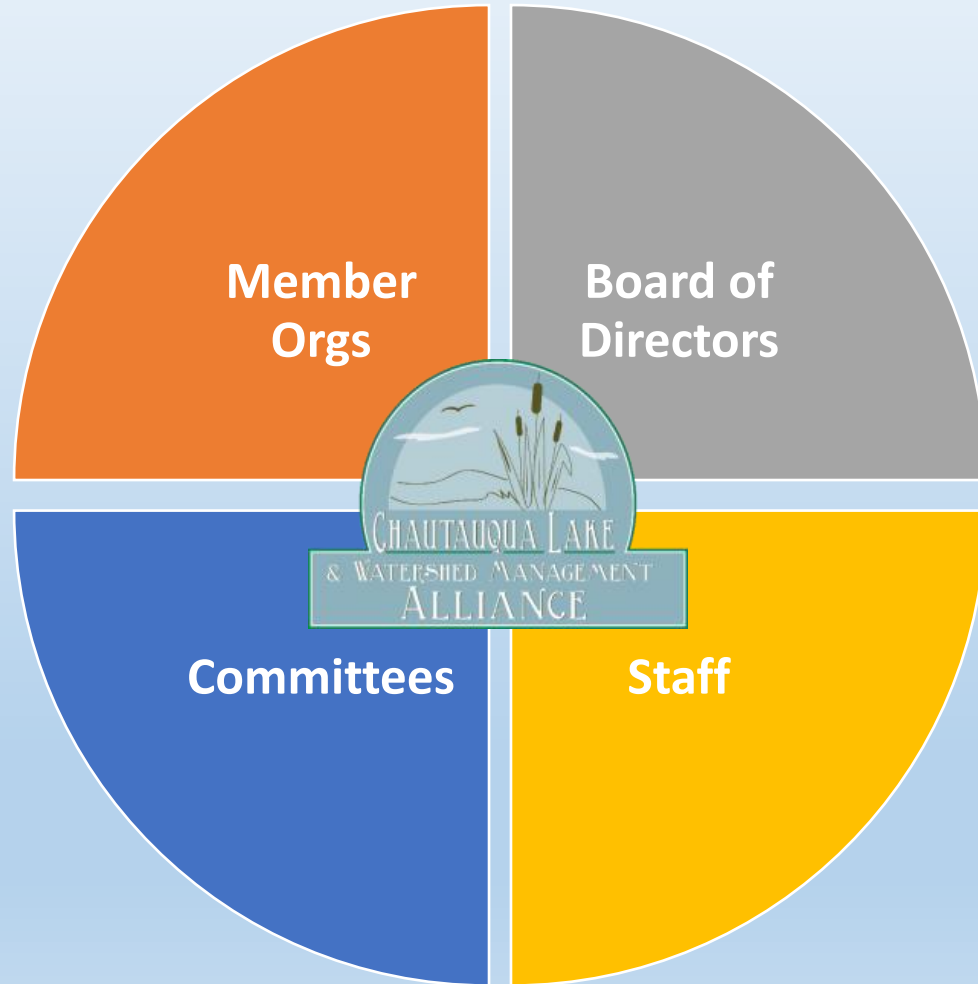
# History & Structure of Our Alliance



## Founding Members

- Chautauqua - Cattaraugus Board of Realtors
- Chautauqua County Chamber of Commerce
- Chautauqua County Government
- Chautauqua County Soil & Water Conservation District
- Chautauqua County Visitors Bureau
- Chautauqua Institution
- Chautauqua Lake Association
- Chautauqua Lake Fishing Association
- Chautauqua Lake Partnership Owners Association
- Chautauqua Utility District
- Chautauqua Watershed Conservancy
- Holmberg Foundation
- Jamestown Audubon Society
- The Lenna Foundation
- Mayville - Chautauqua Community Chamber of Commerce
- NYS Office of Parks, Recreation and Historic Preservation - Allegany Region
- North Chautauqua Lake Sewer District
- Roger Tory Peterson Institute
- South & Center Chautauqua Lake Sewer District
- Town of Busti
- Town of Chautauqua
- Town of Ellery
- Town of Ellicott
- Town of North Harmony
- Village of Bemus Point
- Village of Celoron
- Village of Lakewood
- Village of Mayville

- Board of Directors**
  - ❖ Elected by Members, from the Membership
  - ❖ Cross section of government/NGO leaders from around Chautauqua Lake
  - ❖ County (2), Towns/Villages (3), At-Large (4)
  
- Staff**
  - ❖ Communications, water/environmental
  - ❖ Cross-trained, capacity flexes based on need
  
- Committees**
  - ❖ Lake Management Committee
  - ❖ Watershed Management Committee
  - ❖ Data Analysis & Research Committee
  
- Member Organizations**
  - ❖ 31 Founding Members

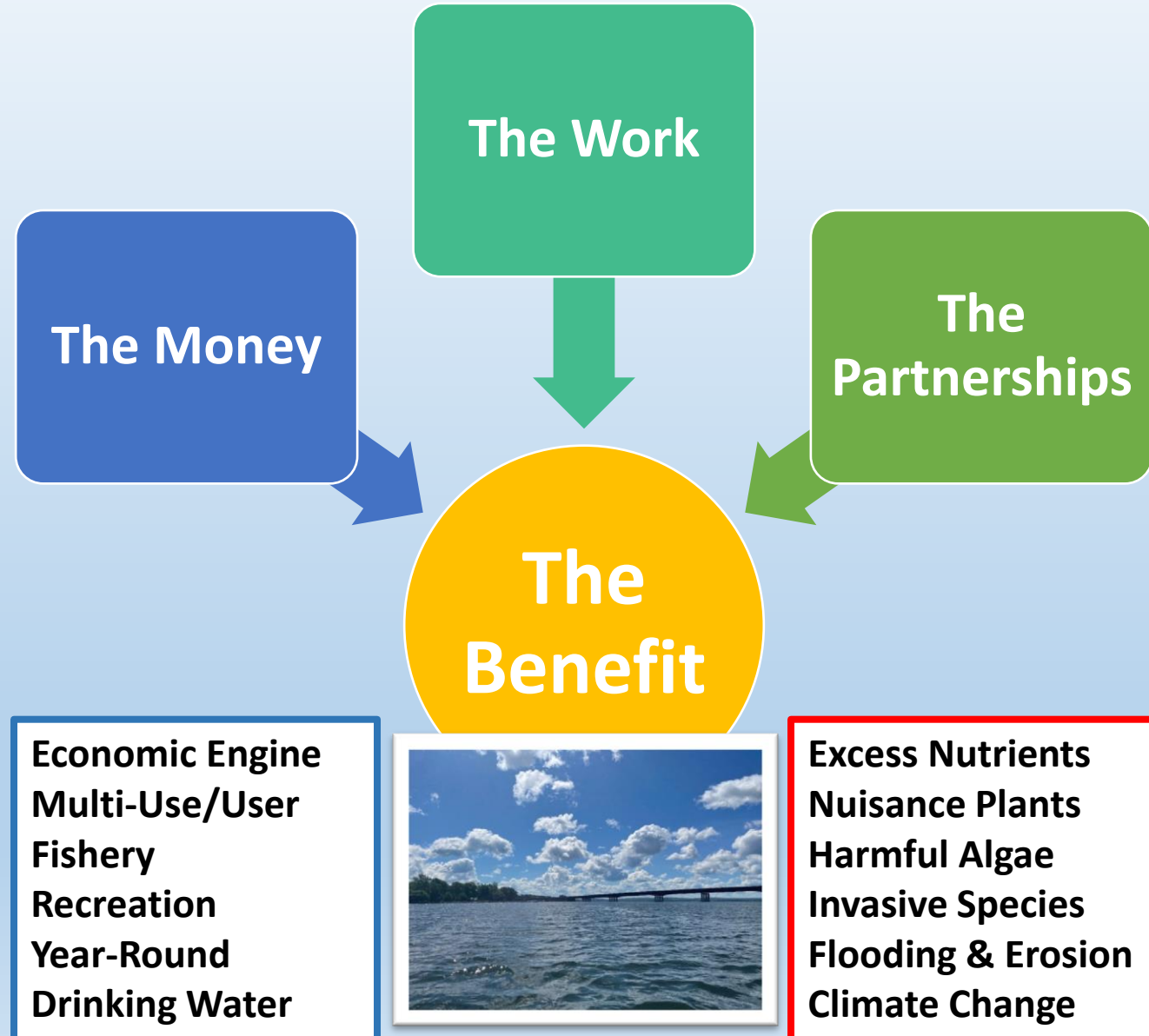


# History & Structure of Our Alliance



## Thank you!

- Members and founders of the Chautauqua Lake Management Commission (CLMC)
- Our Founding & Current Members
- County of Chautauqua
- Ralph C. Sheldon Foundation
- Chautauqua Region Community Foundation (CRCF)
- The Lenna Foundation
- Arnold Holmberg Foundation
- Hultquist Foundation
- Gebbie Foundation
- Committee Volunteers
- Individual Contributors
- Past & Present Board of Directors
- The Scientific Research Community
- Our Lake Community's Stakeholders
- NYS & US agencies: DEC, DOS, EFC, OPRHP, USACE & more



# Complex System, Comprehensive Focus – *Many Stakeholders at Work*

## ***Example Lake Projects***

- ❖ Aquatic plant harvesting
- ❖ Shoreline, Near-shore, and debris clean-up
- ❖ Chemical aquatic plant management
- ❖ Invasive species programs/removal



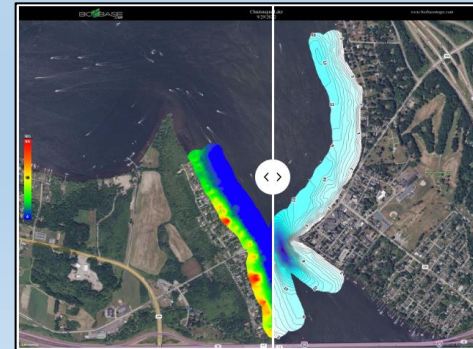
## ***Example Watershed Projects***

- ❖ Stream stabilization
- ❖ Municipal storm water management
- ❖ Lake access/amenities
- ❖ Riparian Buffers
- ❖ Wastewater (septic/sewers)



## ***Example Research/Monitoring***

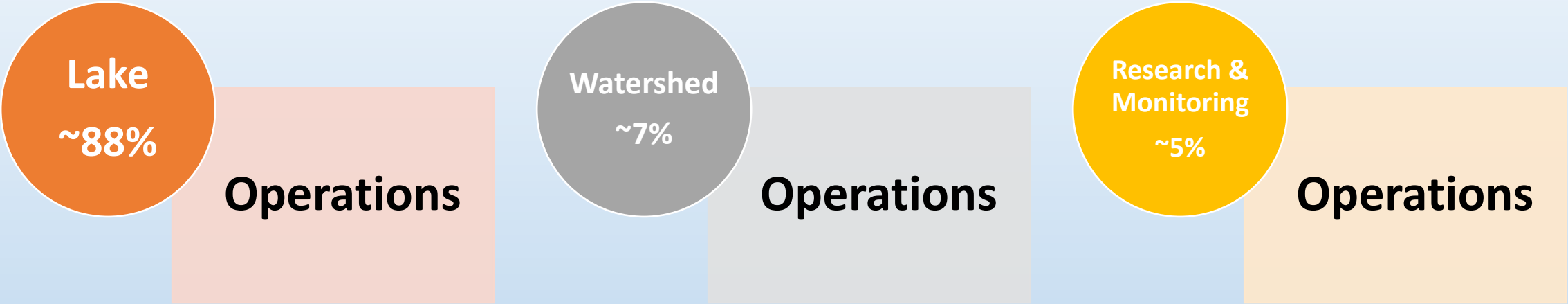
- ❖ Nutrient monitoring
- ❖ HAB monitoring/reporting
- ❖ Fisheries assessment
- ❖ Lake monitoring and modeling
- ❖ Plant and lake condition surveys
- ❖ Public research panels



# Chautauqua Lake Coordinated Workplan 2024



2  
0  
2  
4



- ❖ **Local Allocations Overall ca. 2017-2024:**  
~75% Lake | ~8% Watershed | ~17% Research & Monitoring
- ❖ **Local & Outside Allocations Overall ca. 2015-2024:**  
~39% Lake | ~51% Watershed | ~10% Research & Monitoring
- ❖ *Values above for 2024 do not include NYS grants, which are mostly watershed-focused (~\$1.8M active in 2024).*
- ❖ *Values above only include Alliance-partnered funding.*

# 2024 Chautauqua Lake Management Snapshot – April to September

## 2024



- ❖ Large, dangerous lake debris
- ❖ Lake perimeter
- ❖ About 7.5 truckloads removed



- ❖ Lakewide
- ❖ Target nuisance-level growth
- ❖ ~10.8M lbs. removed (combined with shoreline)



- ❖ Invasive Eurasian Watermilfoil
- ❖ ~188 acres
- ❖ Ellery, Ellicott, Lakewood, N. Harmony



- ❖ Final lakewide sweep
- ❖ Small dredging job
- ❖ Off-lake around 10/1



- ❖ Invasive Curlyleaf Pondweed
- ❖ ~205 acres
- ❖ Bemus, Sherman's Bay, Lakewood



- ❖ Invasive Curlyleaf Pondweed
- ❖ Select areas, Bemus/ Stow, Lower So. Basin



- ❖ Lakewide
- ❖ Barge/manual crews & Mobitracs
- ❖ ~10.8M lbs. removed (combined with harvesting)



- ❖ Invasive Eurasian Watermilfoil & other Nuisance Plants
- ❖ ~9.5 acres
- ❖ Celoron Marinas



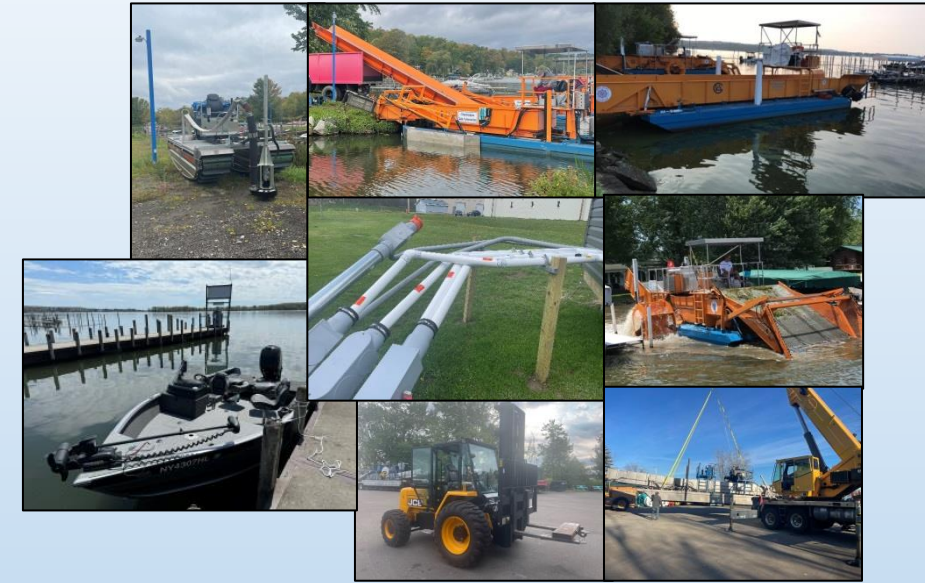
- 2024 Achievements**
- ❖ Larger, earlier harvesting crews
  - ❖ New herbicides for high economic impact areas
  - ❖ Joint ops between CLA & Town of Chautauqua
  - ❖ Delivery of critical new equipment for lake fleet
  - ❖ Development of new data dashboard

- Other 2024 Lake Programs**
- ❖ May-Sept: Invasive Species Boat Stewards (CLA)
  - ❖ June-Sept: Invasive Species Early Detection Program (CWC)
  - ❖ August: Lakewide plant survey (CLP/NC State Univ.)

# Our Members Working Together – *Capital Equipment Investments*

## Capital Equipment Needs Identified by Alliance Members

- ✓ Plant harvester – fulfilled.
- ✓ Plant transport – fulfilled.
- ✓ Aquatic Skimmers – fulfilled.
- ✓ Forklift – fulfilled.
- ✓ *Nearshore cleanup support vessel – fulfillment pending delivery.*
- ✓ Research support boat – fulfilled.
- ✓ Tributary monitoring stations – partially fulfilled (6).
- ✓ Mobitrac dredge pump – fulfilled.
- ✓ Conveyor – fulfilled.
- ✓ Mobitracs – fulfilled.



***Multiple funders including – Chautauqua County/ARPA, NYSDEC, private contributors, CLA, CLP, The Lenna Foundation, Sheldon Foundation, Holmberg Foundation, and CRCF.***

# Our Members Working Together – Watershed Management

## Highlighted Member Project

### Village of Lakewood Grandview Stormwater Management Project

- ✓ Nearly 100,000 cubic feet of detention storage to slow down and filter runoff and reduce peak flows at Fairmount Ave
- ✓ About \$250K NYS WQIP grant leveraged by local investments
- ✓ Multiple partnerships among local entities and funders
- ✓ Concept (2018-2019) → Real Estate/Engineering (2020-2021) → Capital Funding (2021) → Implementation (2023-2025) → **BENEFIT TO VILLAGE, LAKE & WATERSHED FOR DECADES**

## The Problems?

- Flooding
- Sediment & Nutrients
- Nuisance Lake Plant & Algae



### Project Team



### Other Project Partners/Funders

- NYS Dept. of Environmental Conservation
  - County of Chautauqua
  - The Lenna Foundation
- Chautauqua Region Community Foundation
  - Holmberg Foundation
  - Ralph C. Sheldon Foundation
    - Town of Busti
  - Mr. Ronald Davidson

## The Solutions?

- Green Infrastructure*
- Wetland Detention*
- Biofiltration*
- Native Plants*
- Nutrient Binding Media*
- Habitat Features*



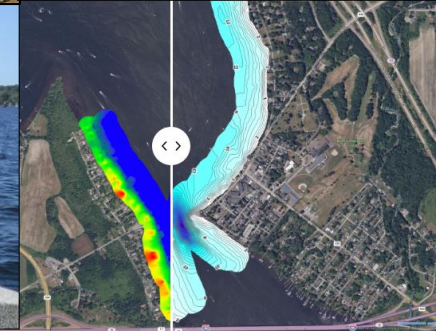
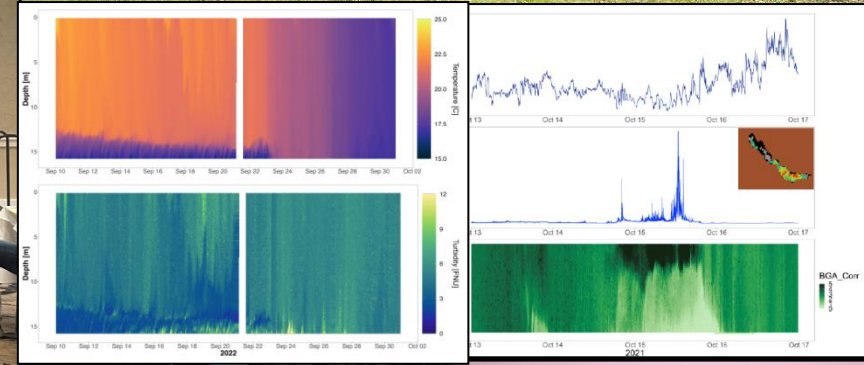
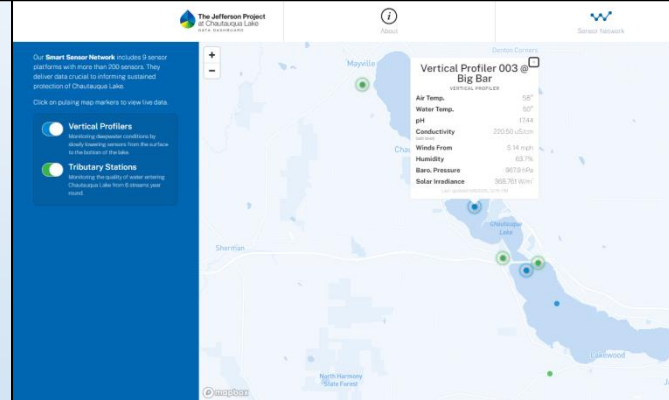
# Our Members Working Together – *Science Seeking Solutions*

***Comprehensive & collaborative lake research efforts with ‘science to solutions’ approach.***

Please visit our website at [chautauquaalliance.org/lake-data-surveys/](http://chautauquaalliance.org/lake-data-surveys/) to view reports and symposiums.

## THANK YOU!

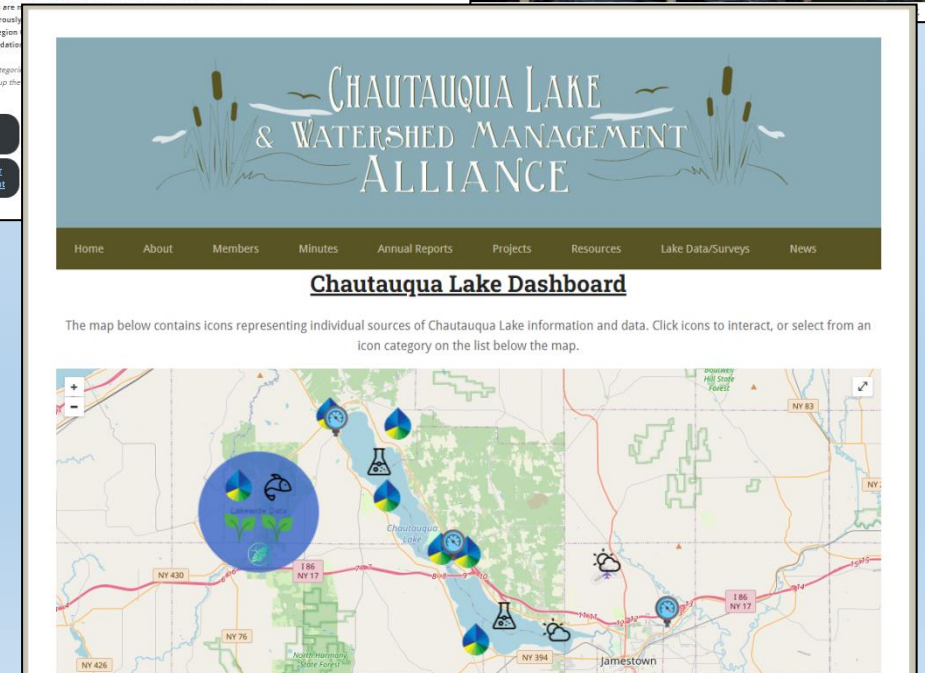
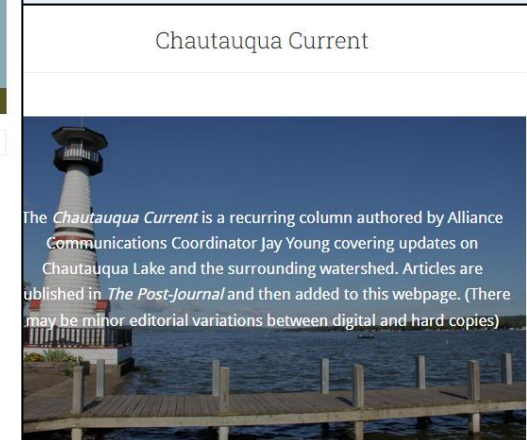
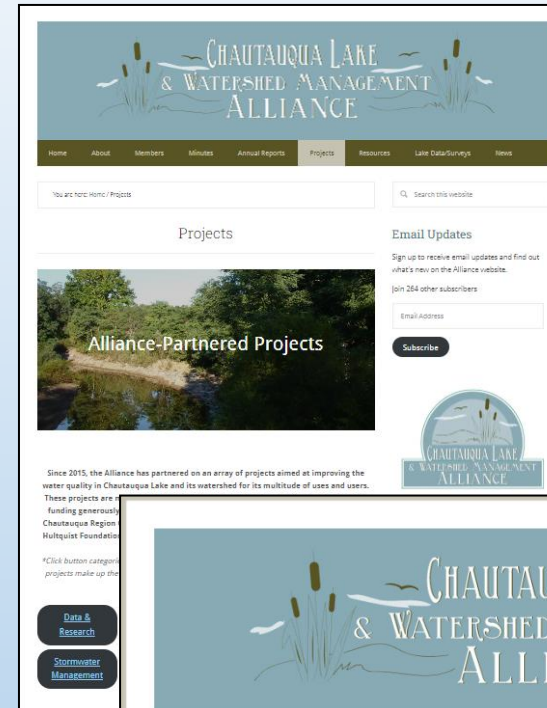
The Jefferson Project, Stantec, Bowling Green State University, SUNY Fredonia, SUNY Oneonta, SUNY ESF, CSLAP (NYSDEC & Volunteers), NYHABS, U.S. Army Corps of Engineers, North Carolina State University, Racine-Johnson Aquatic Ecologists, Rooney’s Aquatic Biologists, Ready Scout, SOLitude Lake Management, Princeton Hydro, GEI Consultants, and More



# Getting the Word Out



- ❖ **Recent website updates** – including comprehensive ‘Projects’ and ‘Lake Data/Surveys’ pages, and **an all-new Interactive Chautauqua Lake Dashboard**.
- ❖ **Rapid dissemination of data/info.**
- ❖ **Hub for lake-related data & surveys and other resources.**
- ❖ ***Chautauqua Current*** - Recurring column in partnership with The Post-Journal, covering lake and watershed topics
- ❖ **Meetings, press releases, emails, etc.**
- ❖ **Aim to build trust, build interest & awareness... & keep it.**
- ❖ **Linkage of information & awareness to action & results**
  
- ❖ **Please visit us at: <http://www.chautauquaalliance.org/>**
- ❖ **And, visit our Members’ websites to learn more.**



# Thank you for your time & support! Questions?

## ❖ Randall Perry, Executive Director

[rperry@chautauquaalliance.org](mailto:rperry@chautauquaalliance.org) | (716) 661-8923

## ❖ Jay Young, Communications Coordinator

[jyoung@chautauquaalliance.org](mailto:jyoung@chautauquaalliance.org) | (716) 661-8918

## ❖ Annual Reports available at:

❖ <http://www.chautauquaalliance.org/annual-reports/>

## ❖ Website: <http://www.chautauquaalliance.org/>



### Founding Members

- Chautauqua - Cattaraugus Board of Realtors
- Chautauqua County Chamber of Commerce
- Chautauqua County Government
- Chautauqua County Soil & Water Conservation District
- Chautauqua County Visitors Bureau
- Chautauqua Institution
- Chautauqua Lake Association
- Chautauqua Lake Fishing Association
- Chautauqua Lake Partnership
- Chautauqua Property Owners Association
- Chautauqua Utility District
- Chautauqua Watershed Conservancy
- Holmberg Foundation
- Jamestown Audubon Society
- The Lenna Foundation
- Mayville - Chautauqua Community Chamber of Commerce
- NYS Office of Parks, Recreation and Historic Preservation - Allegany Region
- North Chautauqua Lake Sewer District
- Roger Tory Peterson Institute
- South & Center Chautauqua Lake Sewer District
- Town of Busti
- Town of Chautauqua
- Town of Ellery
- Town of Ellicott
- Town of North Harmony
- Village of Bemus Point
- Village of Celoron
- Village of Lakewood
- Village of Mayville